

# JET dome rooflight safety concept JET burglary prevention device and fall-through protection

**VELUX®**
**Commercial**


An ingenious package solution against burglary and for greater safety on the roof

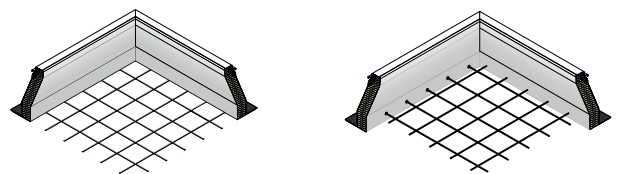
## JET safety level 1

JET SUPER-TOP/JET HAILSTOP/JET TOP-90 sound reduction  
Dome rooflights/pyramids with outer shell made of high-impact resistant polycarbonate and screw connection securing



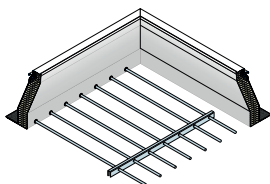
## JET safety level 2

Steel grids installed in the clear opening (see cover picture) or type DSD fall-through protection system installed directly on the trapezoidal sheet



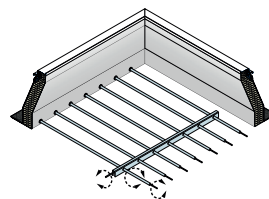
## JET safety level 3

Steel tubes with large dimensioned cross bar installed in the clear opening



## JET safety level 4

Roller grate security according VdS-guideline 2333 with reinforced cross bar as burglary resistant securing in compliance with resistance class 3 according to DIN V ENV 1625.



## JET safety level 5

Level 1 to 4 with additional securing by JET REED flap contact against unnoticed opening and JET EM concussion detector for detection of impact load of any character. Starting from safety level 2, JET TOP-90 dome rooflights can be used as an alternative.

1.1.1  
JET TOP-90

1.1.2  
JET TOP-90 PLUS

1.1.3  
JET TOP-90  
sound reduction

1.2.1  
JET dome rooflight upstands and  
JET roof connection systems

1.4.5  
JET LK-DDS

1.4.6  
JET LK-DDN

| Applicable for the upstand types (cm)                                 | JET steel grid | JET steel installation-tubes/<br>JET roller grate security |                 |               |              | JET DSD       | JET LK-DDN      |              | JET LK-DDS ROUND |
|---|----------------|--|-----------------|---------------|--------------|---------------|-----------------|--------------|------------------|
|   |                | Factory setting  | Factory setting | Sub-structure | Retrofit kit | Sub-structure | Factory setting | Retrofit kit | Retrofit kit     |
| <b>Metall-AK</b>  |                |  |                 |               |              |               |                 |              |                  |
| JET ISO-THERM AK upstand  | 30             | -  | -               | •             | •            | •             | -               | •            | -                |
| JET ISO-THERM AK upstand  | 40/50/60       | •  | •               | •             | •            | •             | -               | •            | -                |
| JET ISO-THERM AK upstand steep  | 30/40/50/60    | •  | •               | •             | •            | •             | -               | •            | -                |
| JET ISO-THERM AK upstand AS   | 40/50          | •  | •               | •             | •            | •             | -               | •            | -                |
| JET metal AK upstand type TE  | 30             | -  | -               | •             | •            | •             | -               | •            | -                |
| JET metal AK upstand type TE  | 40/50          | •  | •               | •             | •            | •             | -               | •            | -                |
| JET metal RAK upstand   | 30             | -  | -               | •             | •            | •             | -               | •            | -                |
| JET metal RAK upstand   | 40/50          | •  | •               | •             | •            | •             | -               | •            | -                |
| JET aluminium TRP AK upstand  | 15/30          | -  | -               | -             | -            | -             | •               | •            | -                |
| JET aluminium TRP AK upstand  | 30             | -  | -               | -             | -            | -             | •               | •            | -                |
| JET aluminium thermal TRP AK upstand                                  | 15/30          | -  | -               | -             | -            | -             | •               | •            | -                |
| JET aluminium thermal TRP RAK upstand                                 | 30             | -  | -               | -             | -            | -             | •               | •            | -                |
| JET steel aluminium composite upstand                                 | 30             | -  | -               | •             | •            | •             | -               | •            | -                |
| JET steel aluminium composite upstand with base flange                | 30             | -  | -               | •             | •            | -             | -               | -            | -                |
| JET steel aluminium composite RAK upstand with base flange            | 30             | -  | -               | •             | •            | -             | -               | -            | -                |
| JET steel aluminium composite AK upstand with TRP-side bend           | 30             | -  | -               | •             | •            | -             | -               | •            | -                |
| JET steel aluminium composite AK upstand with hot flange preparation  | 40             | •  | •               | •             | •            | •             | -               | •            | -                |
| JET steel aluminium composite RAK upstand                             | 30             | -  | -               | •             | •            | •             | -               | •            | -                |
| JET steel aluminium composite RAK upstand with TRP-side bend          | 30             | -  | -               | •             | •            | -             | -               | •            | -                |
| JET steel aluminium composite RAK upstand with hot flange preparation | 40             | •  | •               | •             | •            | •             | -               | •            | -                |
| JET steel aluminium composite TRP-AK upstand                          | 30             | -  | -               | •             | •            | -             | -               | •            | -                |
| JET steel aluminium composite TRP-RAK upstand                         | 30             | -  | -               | •             | •            | -             | -               | •            | -                |
| <b>JET PVC AK upstand</b>   |                |  |                 |               |              |               |                 |              |                  |
| JET PVC AK upstand  | 15/30/45       | -  | -               | •             | -            | •             | -               | •            | -                |
| <b>GFK-AK</b>   |                |  |                 |               |              |               |                 |              |                  |
| JET GRP AK upstand  | 15/30/50       | -  | -               | •             | -            | •             | -               | •            | -                |
| JET GRP RAK upstand   | 30/45          | -  | -               | •             | -            | •             | -               | •            | -                |
| JET GRP upstand AK corrugated profile                                 | 20/30          | -  | -               | •             | -            | -             | -               | •            | -                |
| JET GRP upstand RAK corrugated profile                                | 30             | -  | -               | •             | -            | -             | -               | •            | -                |
| JET GRP TRP RAK upstand   | 30             | -  | -               | •             | -            | -             | -               | •            | -                |
| JET GRP AK upstand with TRP-side bend                                 | 15/30/50       | -  | -               | •             | -            | -             | -               | •            | -                |
| JET GRP RAK upstand with TRP-side bend                                | 30             | -  | -               | •             | -            | -             | -               | •            | -                |
| JET GRP aluminium composite TRP AK upstand                            | 15/30/50       | -  | -               | •             | -            | -             | -               | •            | -                |
| JET GRP aluminium composite TRP RAK upstand                           | 30             | -  | -               | •             | -            | -             | -               | •            | -                |
| JET GRP AK upstand with base flange                                   | 15/30/50       | -  | -               | •             | -            | -             | -               | •            | -                |
| JET GRP RAK upstand with base flange                                  | 30             | -  | -               | •             | -            | -             | -               | •            | -                |
| JET GRP AK upstand with hot flange preparation                        | 30/50          | -  | -               | •             | -            | -             | -               | •            | -                |
| JET GRP RAK upstand with hot flange preparation                       | 30/45          | -  | -               | •             | -            | -             | -               | •            | -                |
| JET GRP AK upstand round  | 15/30/50       | -  | -               | -             | -            | -             | -               | -            | •                |
| <b>JET Rehabilitation AK upstand</b>                                  |                |  |                 |               |              |               |                 |              |                  |
| JET PVC extension unit  | 15/30          | -  | -               | -             | -            | -             | -               | •            | -                |
| JET metal riser   | 25             | •  | •               | -             | •            | -             | -               | •            | -                |
| <b>External AK upstand</b>  |                |  |                 |               |              |               |                 |              |                  |
| External AK upstand   |                | -  | -               | -             | -            | -             | -               | •            | •                |

• = available  
- = not applicable

**Note:** All JET fall-through protection products are also suitable for installation in dome rooflights with SHEV function. Technical clarification is required before installation.

Valid from date of publication until new edition. Version: January 2021. Not responsible for printing errors, mistakes and technical alterations.